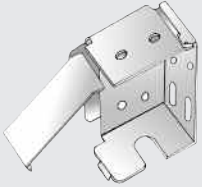


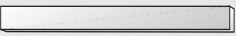
# wooden venetian blinds

## fittings

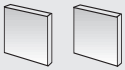
- 1** End brackets (pair)



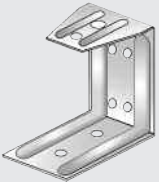
- 2** Matching fascia



- 3** Matching end returns (if blind is to be fitted outside the window recess).



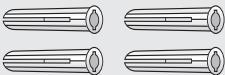
- 4** Centre support bracket (if length requires).



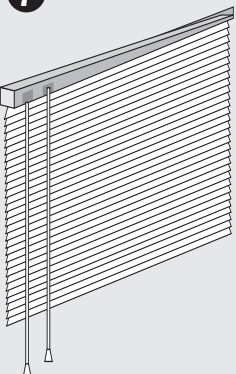
- 5** Screws: min 4



- 6** Rawl plugs: min 4



- 7** Blind: 1



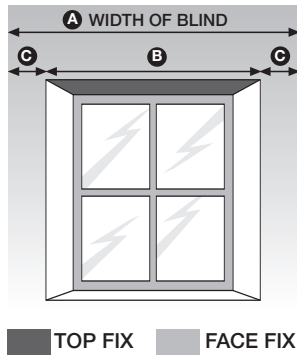
## fitting instructions

### Outside Recess

If fitting the blind outside the window, measurements **(C)** will need to be the same. To work out **(C)**, simply minus **(B)** from **(A)** and divide the answer by two. Follow instructions for FACE FIXING

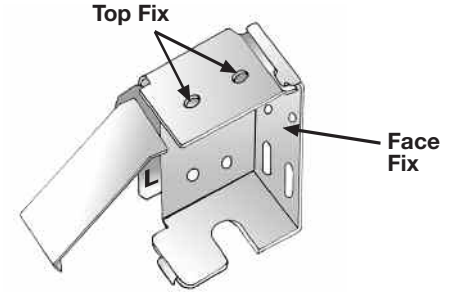
### Inside recess

Decide whether to FACE or TOP FIX. FACE FIX to fit the bracket to the window frame. TOP FIX to the lintel if the window frame is uPVC, or if there are any obstructions, e.g. window handles.



step one

Extend hinged door on each bracket as far as it will go. Identify left and right brackets from light L and R markings inside. Position the bracket and mark two holes according to type of fixing chosen in Step One.



step two

Once the brackets are fitted, remove plastic end caps from blind headrail. Slide the blind into the brackets, with velcro patches facing towards you.



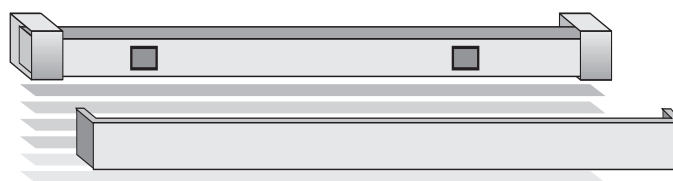
step three

Push down and snap shut the hinge doors to lock the headrail into position.



step four

Remove the thin plastic backing from both velcro patches, leaving adhesive surfaces. Position fascia on front and press firmly to adhere. If supplied, wooden returns will fit automatically in place at ends of headrail.



step five

Use one set of cord controls to raise and lower the blind, pulling it to one side to lock into the desired position. Use the other cord controls to angle the louvres.



step six

### WARNING

IN THE INTEREST OF SAFETY, IT IS ADVISABLE TO KEEP ALL PULL CORDS AND CHAIN/BEAD CORDS OUT OF THE REACH OF CHILDREN.